

ROLLON®

Linear Evolution

Linear Line

Telescopic Line

Actuator Line



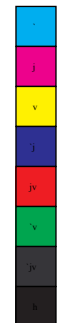
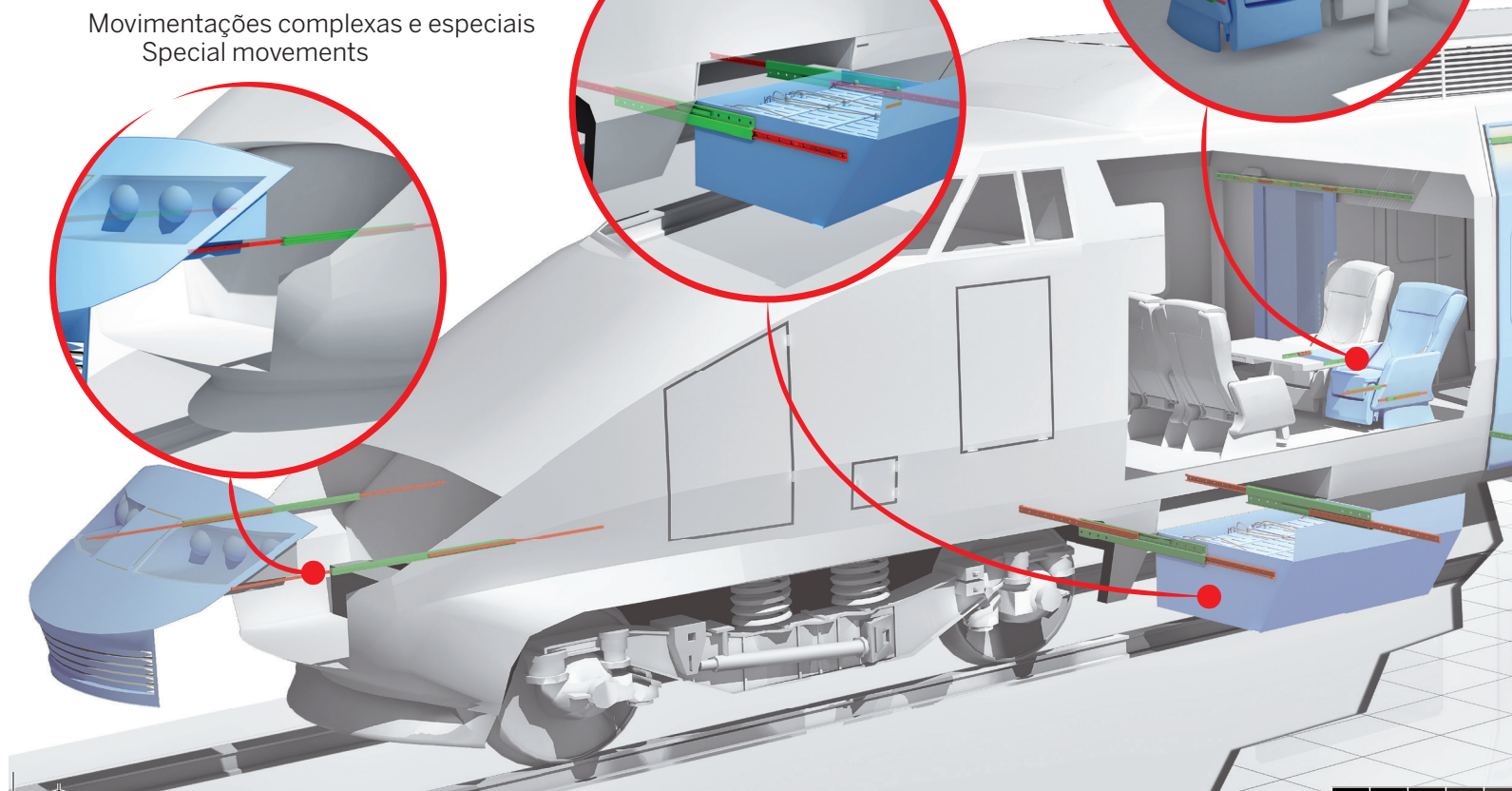
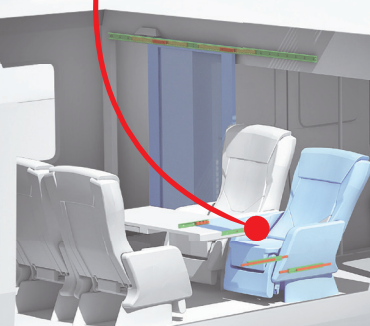
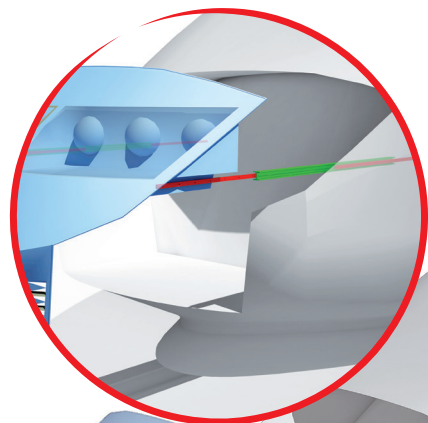
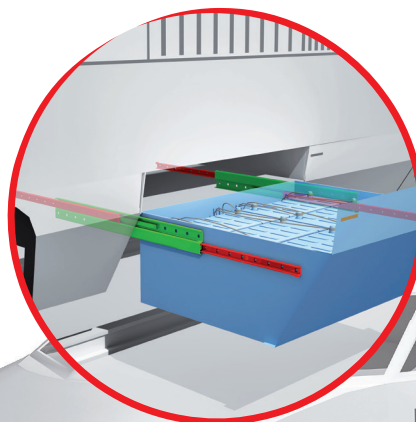
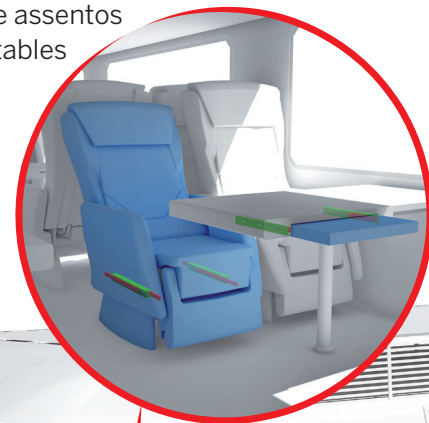
Soluções lineares para aplicações ferroviárias
Linear solution for railway applications



Ajustes de mesas deslizantes e assentos
 Seat adjustment, sliding tables

Extração: caixas de baterias, geradores, transformadores
 Extractions: battery box, power chargers, AC systems

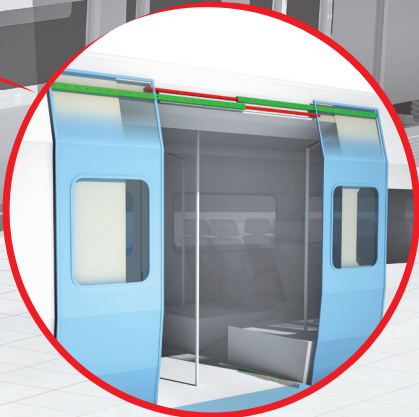
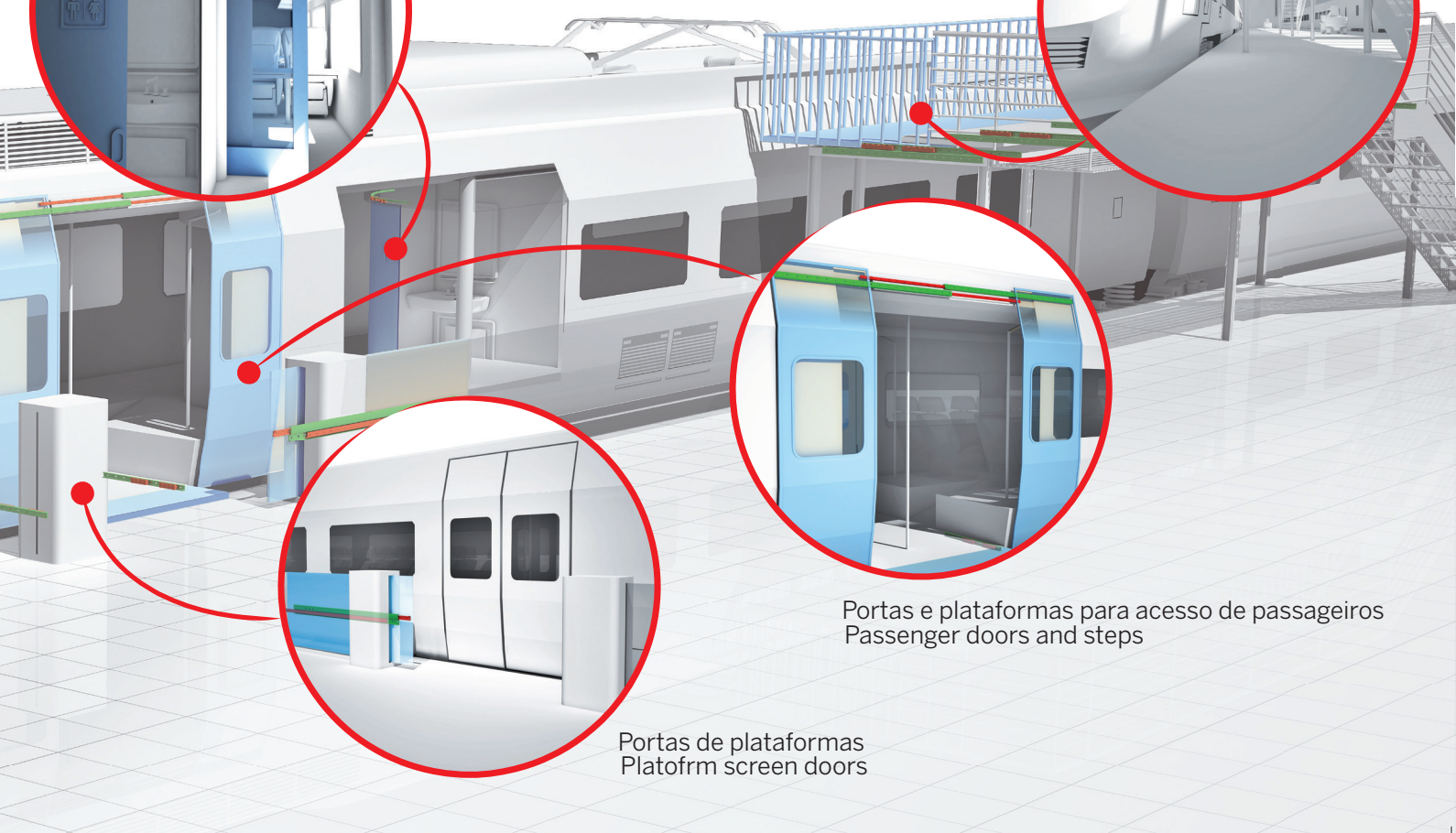
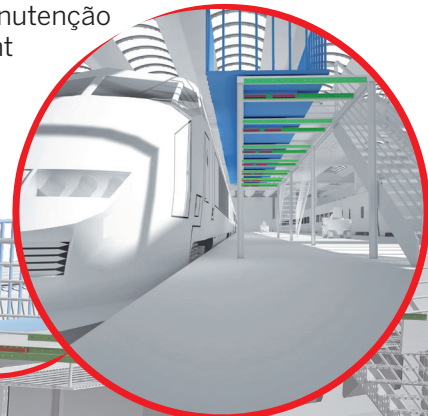
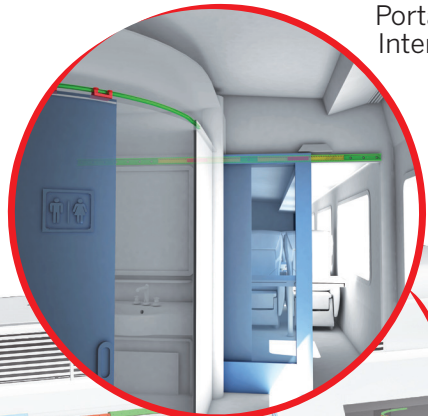
Movimentações complexas e especiais
 Special movements



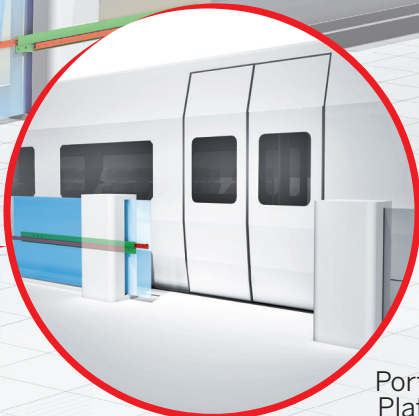


Portas interiores
Internal doors

Equipamentos para manutenção
Maintenance equipment



Portas e plataformas para acesso de passageiros
Passenger doors and steps



Portas de plataformas
Platform screen doors





Linear Line

Product families • Famílias de produtos

Compact Rail



- > Self alignment system • Protected against dirt
- Smooth movement, high speed
- Sistema de auto-alinhamento • Protegido contra sujeiras
- Movimento suave e alta velocidade

X-Rail



- > Stainless steel rail available • Resistant against liquids and scratching
- Self alignment system
- Disponível em aço inoxidável • Resistente a corrosões
- Sistema de auto-alinhamento

Easyslide



- > Compact and durable linear bearing • Reliable and smooth movement
- Easy mounting
- Compacto e longa vida útil • Movimento suave e confiável
- Montagem simples

Mono Rail



- > High stiffness • High load capacity
- Equal load capacities in all directions
- Elevada rigidez • Elevada capacidade de carga
- Capacidade de carga equivalente para todas as direções

Curviline



- > Curved rails for nonlinear movement
- Constant or variable radius • Customized solutions
- Trilho curvado para aplicações não lineares
- Raios constantes ou variáveis • Soluções customizadas

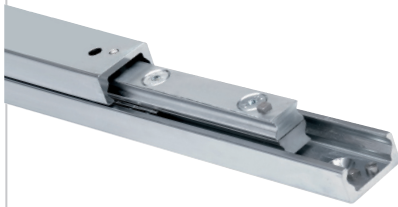


Telescopic Line

Product families • Famílias de produtos



Telescopic Rail



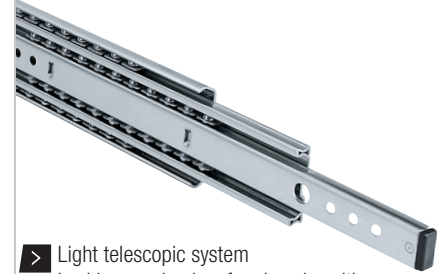
- > High load capacities with low deflection
- Shocks or vibrations resistant
- Full extraction
- Elevada capacidade de carga com baixa deflexão
- Resistente a choques e vibrações
- Extensão total

Opti Rail



- > Compact size
- High rigidity
- Cost effective
- Tamanho compacto
- Elevada rigidez
- Ótimo custo-benefício

Light Rail



- > Light telescopic system
- Locking mechanism for closed position
- Sistema telescópico de construção leve
- Mecanismo de trava para posição fechada

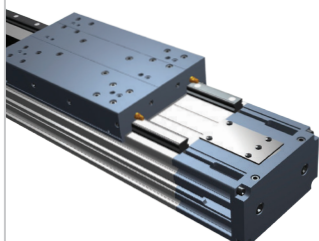




Actuator Line

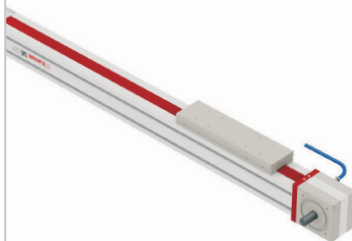
Product families • Famílias de produtos 

Plus System



- > Protected for critical environment conditions
- Stressing work cycles
- Anticorrosion version available
- Protegido para ambientes com condições críticas
- Extremamente robusto
- Disponível em versão anticorrosão

Clean Room System



- > Designed for clean room • Low particles emission
- Clean room ISO 14644-1 or FED STD 209E certification
- Idealizado para “clean room” • Baixa emissão de partículas
- Certificações Clean room ISO 14644-1 ou FED STD 209E

Smart System



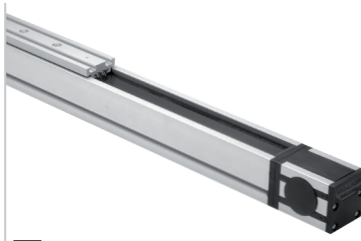
- > High quality/price ratio • Self-supporting structure
- Suitable for multi-axis system
- Elevado custo-benefício
- Estruturado para montagens
- Possibilidades de múltiplas configurações de eixos

Eco System



- > Light weight • Simple construction • Important stroke
- Sistema leve • Construção leve e simples
- Longos cursos

Uniline System



- > High speed • Compact rail with radial ball bearing rollers
- Easy assembly
- Alta velocidade • Guia interna com cursor radial de rolamentos
- Fácil montagem

Precision System



- > Ball screw driven for high precision • High stiffness
- Suitable for multi-axis system
- Sistema com fuso de alta precisão • Elevada rigidez
- Possibilidades de múltiplas configurações de eixos

Soluções lineares para todas as aplicações

Linear solutions for every application



ROLLON®

Linear Evolution



- Rollon Branches & Rep. Offices
- Distributors

ROLLON S.p.A. - ITALY



Via Trieste 26
I-20871 Vimercate (MB)
Phone: (+39) 039 62 59 1
www.rollon.it - infocom@rollon.it

Branches:

ROLLON GmbH - GERMANY



Bonner Strasse 317-319
D-40589 Düsseldorf
Phone: (+49) 211 95 747 0
www.rollon.de - info@rollon.de

ROLLON B.V. - NETHERLANDS



Ringbaan Zuid 8
6905 DB Zevenaar
Phone: (+31) 316 581 999
www.rollon.nl - info@rollon.nl

ROLLON Ltd - CHINA



51/F Raffles City, 268 Xi Zang
Middle Road,
200001 Shanghai (China)
Phone: (+86) 021 2312 7582
www.rollon.cn.com - info@rollon.cn.com

ROLLON SpA - RUSSIA



1st Lusi ovsky Pereulok, 3B, Office 404
119049 Moscow (RUS)
Phone: +7 (495) 799 42 29
www.роллон.рф - info@роллон.рф

Regional Manager:

ROLLON S.A.R.L. - FRANCE



Les Jardins d'Eole, 2 allée des Séquoias
F-69760 Limonest
Phone: (+33) (0) 4 74 71 93 30
www.rollon.fr - infocom@rollon.fr

ROLLON Corporation - USA



101 Bilby Road. Suite B
Hackettstown, NJ 07840
Phone: (+1) 973 300 5492
www.rolloncorp.com - info@rolloncorp.com

ROLLON Pvt. Ltd. - INDIA



Regus Gem Business Centre, Hosur Rd.
26/1, Bommanahalli Bangalore 560068
Phone +91 80 67027066
www.rollonindia.in - info@rollonindia.in

ROLLON - SOUTH AMERICA



R. Joaquim Floriano, 397, 2o. andar
Itaim Bibi - 04534-011, São Paulo
Phone: +55 (11) 3198 3645
www.rollonbrasil.com.br - info@rollonbrasil.com